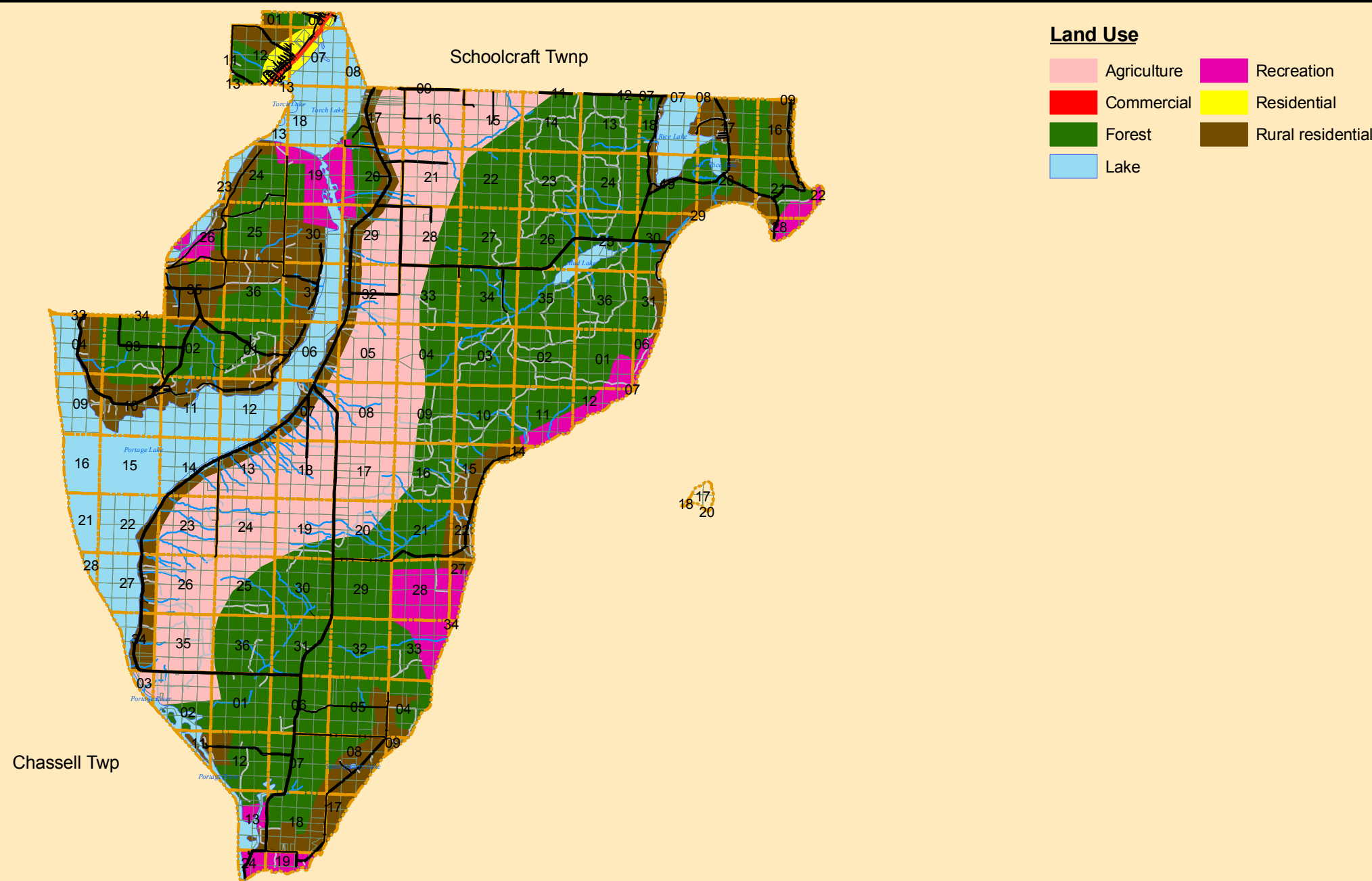
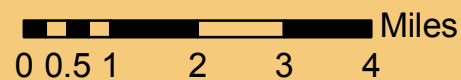


TORCH LAKE TOWNSHIP: Future Land Use



1:140,000



Data Obtained from GEM Center for Science and Environmental outreach.
 MTU Source:
 Map Produced by Russell Slatton for the Houghton County Planning Commission
 Revised by: MAB - UP Engineers & Architects, Inc.
 Revision Date: 06/26/2006 & 11/28/2011

Legend

- | | |
|--|--|
| Sections | County Primary Roads |
| Q_Quarter Sections | Highways |
| Lakes | All Other Roads |
| | Streams |
| | Utilities |

