
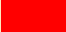
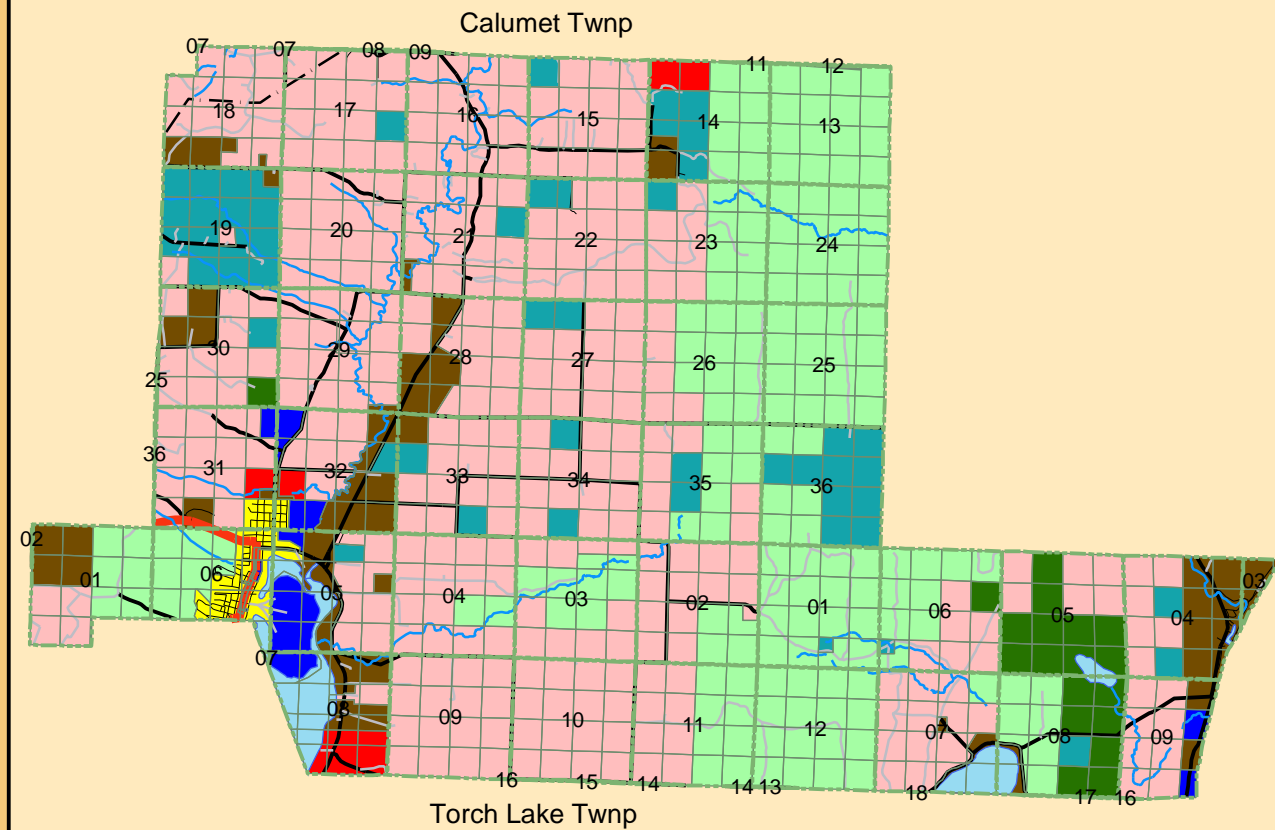







SCHOOLCRAFT TOWNSHIP: Current and Future Land Use

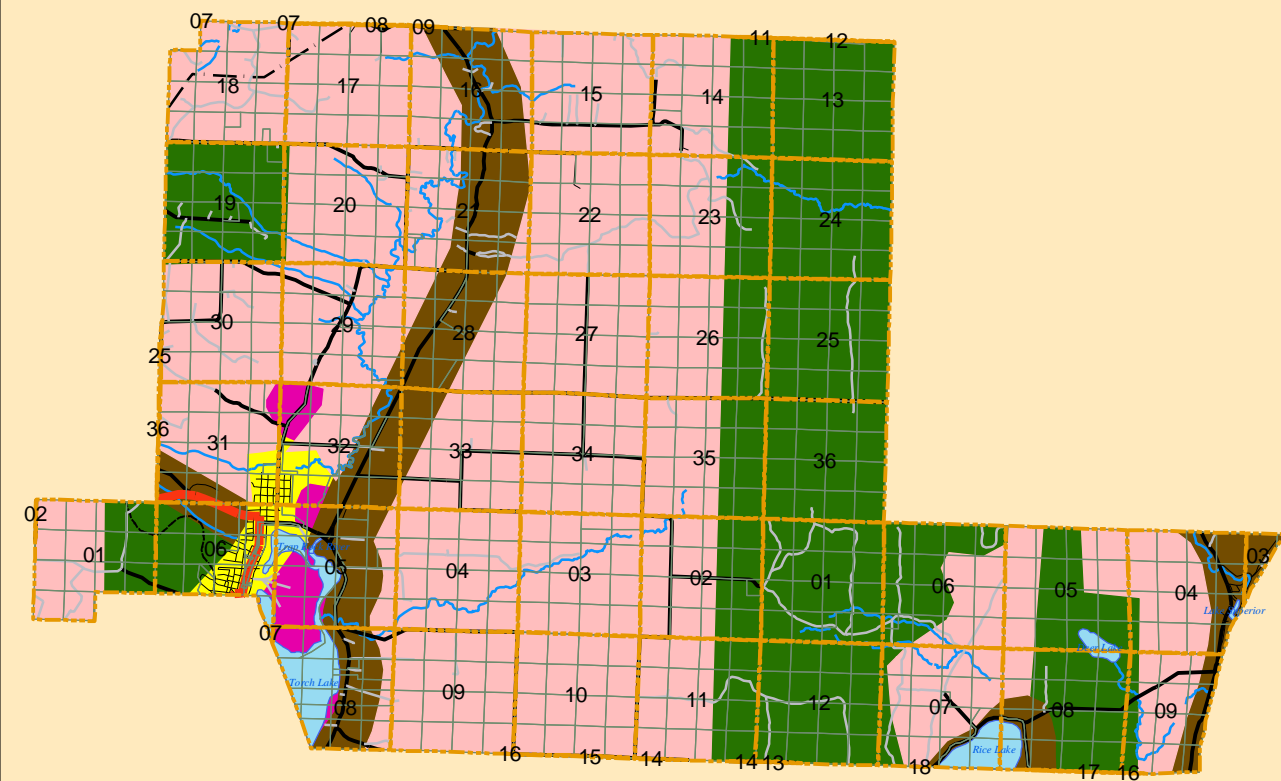
Current Land Use

- | | |
|---|--|
|  Agricultural |  Industrial |
|  Commercial |  Public, Institutions |
|  Commercial Forest |  Residential, rural |
|  Private Forest |  Residential |
|  Public Forest | |

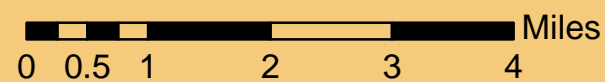


Future Land Use






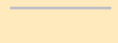


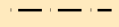
- | | |
|---|--|
|  Agriculture | |
|  Forest | |
|  Recreation | |
|  Residential | |
|  Rural residential | |



1:100,000



Legend

- | | | |
|--|--|---|
|  Sections |  County Roads |  Streets |
|  Q_Quarter Sections |  Highways |  Trails |
|  Lakes |  Streams | |
| |  Utilities | |

Data Obtained from GEM Center for Science and Environmental outreach.
 MTU Source:
 Map Produced by Russell Slatton for the Houghton County planning Commission
 Revised by: UP Engineers & Architects, Inc.
 Revision Date: 11/25/2005